



## Florence Mini Storage Lockers

Conveniently store keys, wallet, jewelry/watches, small electronic devices, cell phones, and more!

Mini Storage Lockers shown in 5H x 6W compartment layout, recessed-mounted, in anodized aluminum finish, with front master access and hasps utilizing customer-provided padlocks



800.275.1747



800.275.5081

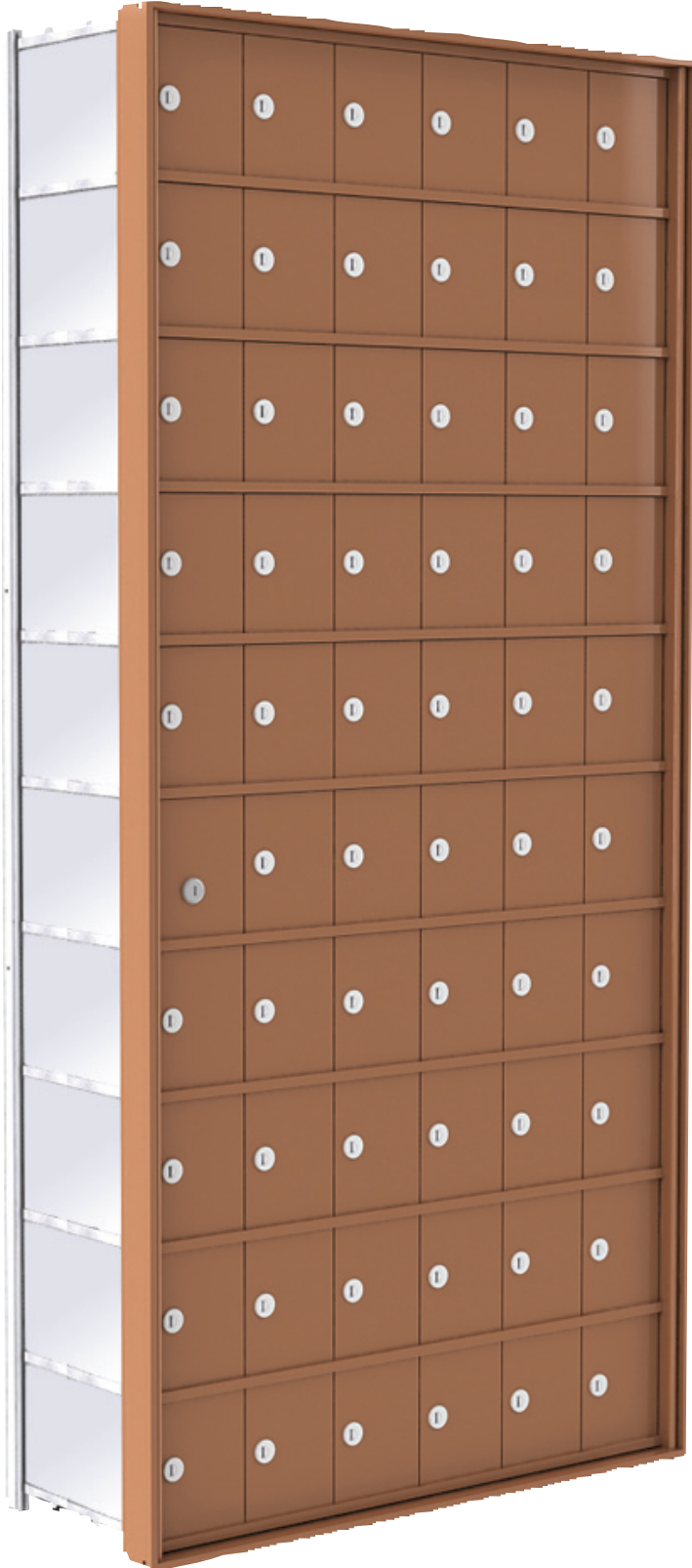


[florencemailboxes.com](http://florencemailboxes.com)

# Mini

STORAGE LOCKER

Perfect for temporary storage, these express lockers, unlike other small storage lockers on the market today, can be configured to your specific application. Utilizing an industry unique online configurator, easily choose desired number of rows and columns along with all specific features needed to design your own custom locker.



The small size of these lockers means they can be installed just about anywhere; choose from recessed-mount or surface-mount with a collar.



Convenient for any facility where cell phones are not allowed, this versatile solution can be used in large quantities at the main entrance or distributed throughout the facility.



If accessibility is required by management, a master door option allows easy access to all locker compartments within a unit.

## Mini - Standard Features

- Configure from 1 to 12 compartments high\* and 1 to 6 compartments wide
- 5-pin cylinder cam lock with two keys
- Clear plastic number slots
- 4" W x 5" H compartment doors
- 6-7/16" deep compartments
- Anodized aluminum finish
- Recess-mounted
- No master gate access

\***Note:** Maximum height for front access units is 10 compartments tall. Due to the combined weight of the front gate and locks, master door access is *not recommended* for units taller than seven compartments high when using locks other than the standard cam lock.

## Mini - Optional Features

- 3/4" high engraved numbers with or without black or white fill
- Architectural powder coat colors
- Engraved tabs or vision windows
- Compartment shelf padding
- 2-7/8" shallow depth compartments
- Surface-mount collar
- Master door\* for front gate access
- Lift-off or hinged rear cover access



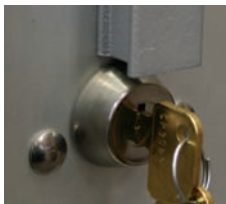
## Color Options

Customize your Mini Storage Locker with ten different architectural powder coat finishes

<b>Dark Bronze</b> PMS Black 7C	<b>Black</b> PMS Black 6C	<b>Postal Grey</b> PMS 413C	<b>Gold</b> PMS 871C	<b>Antique Bronze</b> PMS 8622C
<b>Sandstone</b> PMS 75017C	<b>Blonde Gold</b> PMS 7536C	<b>Silver Speck</b> PMS 877C	<b>Gold Speck</b> PMS 7-5C	<b>Antique Copper</b> PMS 876C

## Lock and Identification Options

Choose from multiple lock and door identification options.  
Not shown below: Spring-latch lock, Thumb-latch



High-Security Master Access Door Lock



Standard Cam Lock



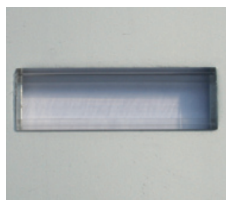
Combination Lock



Keyless User Defined Combo Lock



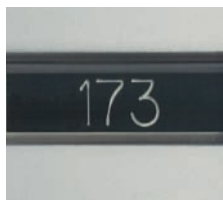
Hasp for User-Provided Padlock



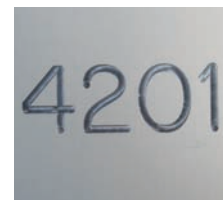
Clear Vision Windows



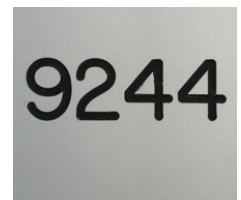
Plastic Number Slots



Engraved Tabs



3/4" Engraving

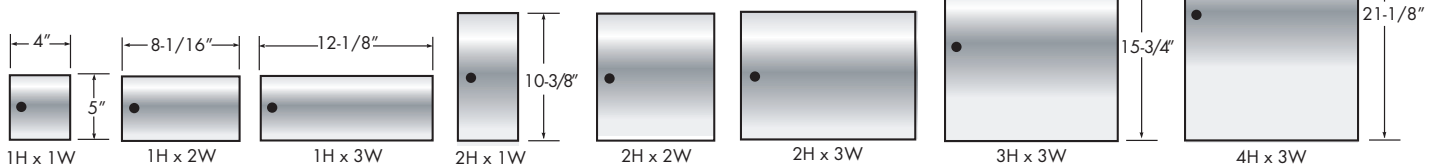


Engraved with Color Fill

## Door Size Options

Multiple door sizes are available for locker compartments

**Note:** Doors utilizing hasp or master access lock have size limitations (see tech docs for details)



# Mini

STORAGE LOCKER

Popular in and around secured access areas such as court houses, police stations, military bases, jails, prisons or correctional facilities. They are also useful around sports stadiums, activity centers, exercise facilities, employee break rooms, schools and colleges, or anywhere that convenient storage of small valuable items is needed.

**Space saving**

**Self service solution**

**Small storage compartments**

**Low maintenance system for operators**

**AF FLORENCE**  
manufacturing company  
A GIBRALTAR INDUSTRIES COMPANY

Find an Authorized Florence Dealer online at [florencemailboxes.com/dealers](http://florencemailboxes.com/dealers)